

High Accuracy Estimation of Inundation

Tohoku University School of Engineering
So Kazama

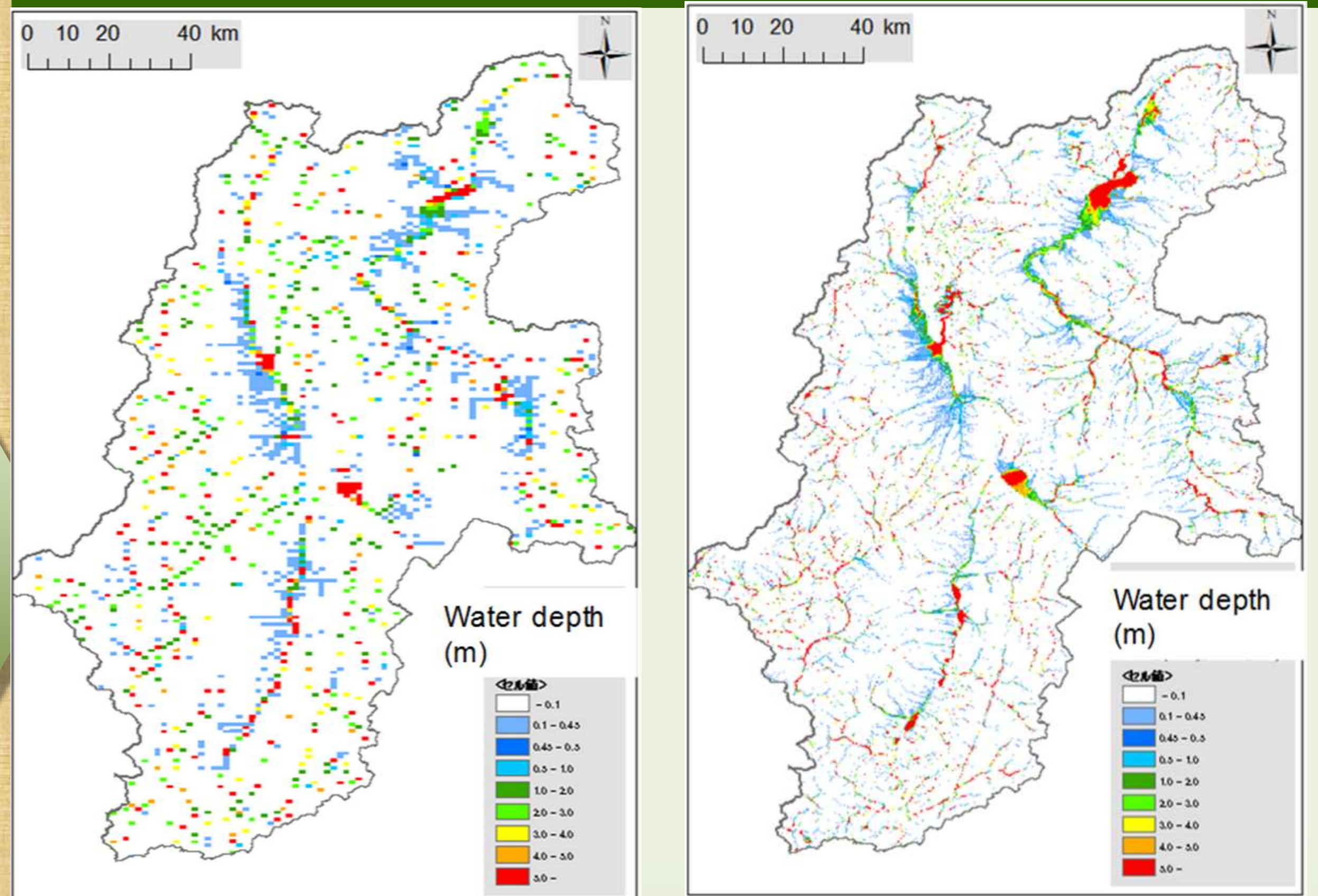
Background



2018 West Japan Flooding

We want to understand:
Where is the high risk area?
What time is flood occurrence?
High accurate estimations is required.

Simulation and different resolution

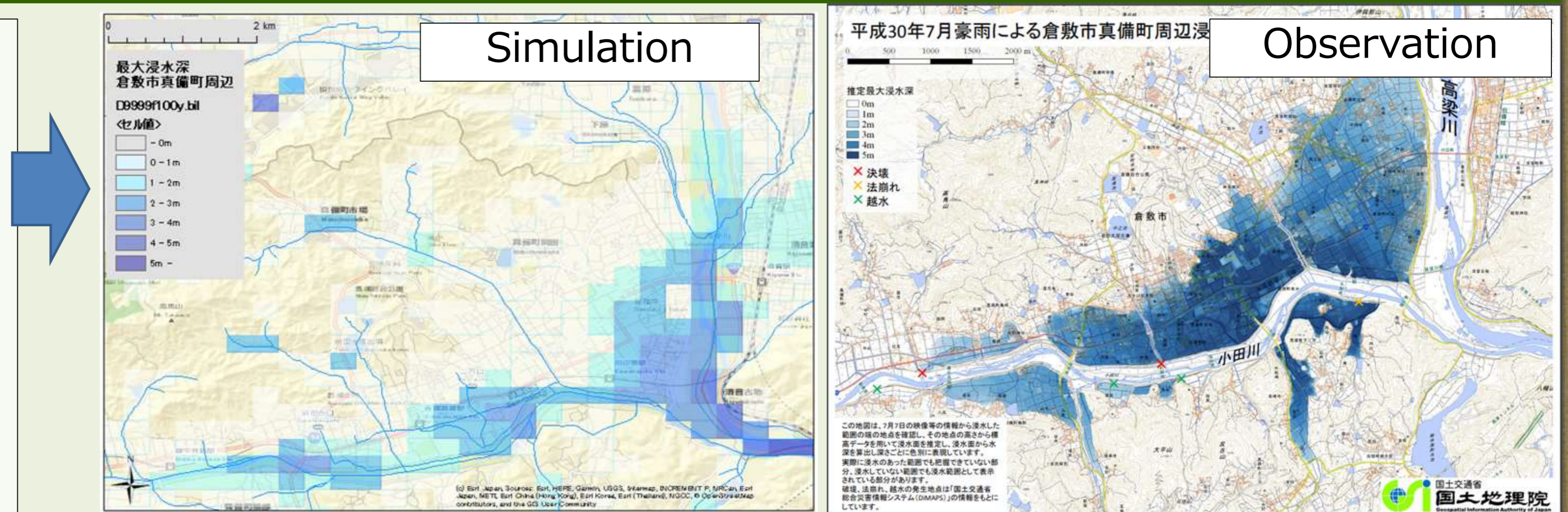


Resolution. L:1km R:250m
We can see the different results of water depth in inundation areas.(100years probability flood)

Accuracy and Future goals

Accuracy

There is no much different between simulation and observation in 2018 West Japan flooding.



Future goals

- More detailed information of flooding can be released.
- Land design and city planning request more accurate risk maps.
- Real time information can provide by a high speed computer.



Supercomputer SX-ACE